



SALE E PEPE

SALE E PEPE

V2 R10 HD

FORMATI • SIZES • FORMATS • FORMATE

SPESSORE THICKNESS \approx 7 mm 1/4"



303819
Sale e Pepe New Beige
30,5x30,5 12"x12"



303825
Sale e Pepe New Silver
30,5x30,5 12"x12"



303853
Sale e Pepe New Graphite
30,5x30,5 12"x12"



301504
Sale e Pepe Brown
30,5x30,5 12"x12"

SPESSORE THICKNESS \approx 12 mm 1/2"



303820
Sale e Pepe New Beige
30,5x30,5 12"x12"



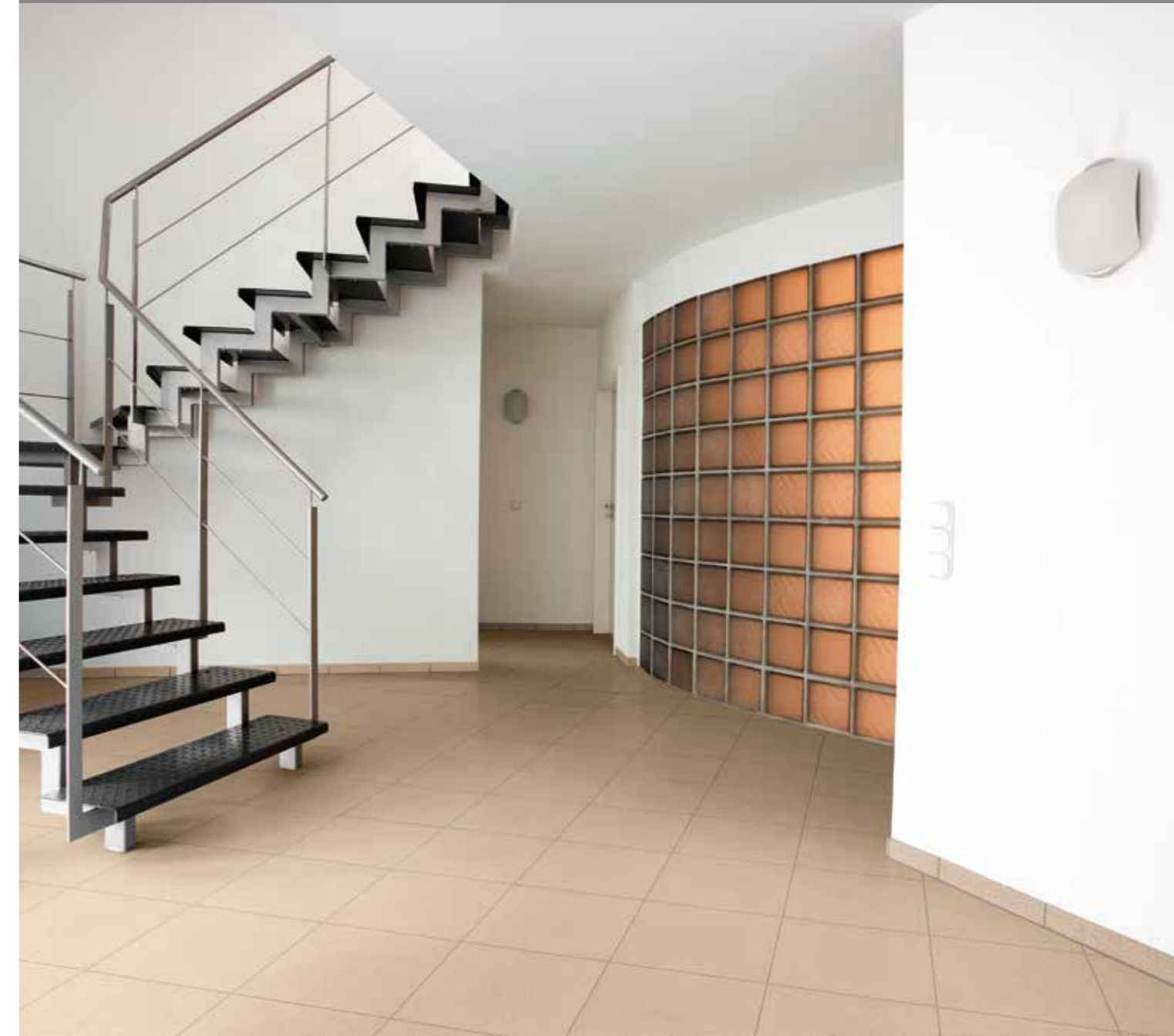
303826
Sale e Pepe New Silver
30,5x30,5 12"x12"



303854
Sale e Pepe New Graphite
30,5x30,5 12"x12"

GRES FINE PORCELLANATO A TUTTA MASSA / FULL BODY PORCELAIN STONEWARE
GRÈS CÉRAME FIN PLEINE MASSE . FEINSTEINZEUG

SALE E PEPE BEIGE 30,5x30,5



PEZZI SPECIALI • TRIMS • PIÈCES SPÉCIALES • FORMTEILE



Battiscopa 46

Battiscopa/5 7,5x30,5

★ Disponibili solo su ordinazione . Available on demand

PESI E MISURE • WEIGHT AND SIZES • POIDS ET MESURES • GEWICHTE UND VERPACKUNGEN

dimensioni sizes dimensions abmessungen	spessore thickness épaisseur stärke	pz/collo pcs/box pc/boite stk/ktn	mq/collo sqm/box m/boite qm/ktn	kg/collo kg/box kg/boite kg/ktn	colli/pallet box/europal boites/europal ktn/europal	mq/pallet sqm/pallet m/pallet qm/pallet	kg/europal kg/europal kg/europal kg/europal
Sale e Pepe 30,5x30,5	7 mm	15	1,39	20,52	48	66,72	1370
Sale e Pepe 30,5x30,5	12 mm	9	0,837	21,10	48	40,176	1035



Dado Ceramica S.r.l.

Via Sicilia 21 - 40017 San Matteo della Decima (BO) - Italy

Telefono +39 051 6819611

Telefax +39 051 6819650

www.dadoceramica.it - info@dadoceramica.it

Follow us   

ecodado⁺™ Group

design, tecnologia e ambiente in un unico progetto
design, technology and environment in a single project

EN ISO 9001:2015 - EN ISO 14001:2015
EN ISO 50001:2018 - EN ISO 45001:2018
UNI EN ISO 14021: 2016 - GREENGUARD GOLD

