



NATURAL
COLOR

NATURAL COLOR

RIVESTIMENTI WALL TILES REVÊTEMENTS WANDFLIESEN

NATURAL COLOR



NATURAL COLOR AVORIO | NATURAL COLOR CARMELLO | VINTAGE CARMELLO



NATURAL COLOR

20x40 8"x16"

RIVESTIMENTO IN BICOTTURA



301644/23 02 ■
Natural Color Ghiaccio
20x40 19



301649/23 02 ■
Natural Color Genziana
20x40 19



301648/23 02 ■
Natural Color Caramello
20x40 19



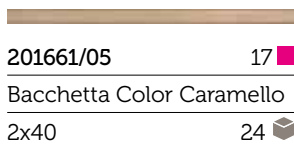
301646/23 02 ■
Natural Color Polvere
20x40 19



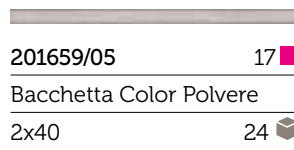
301645/23 02 ■
Natural Color Avorio
20x40 19



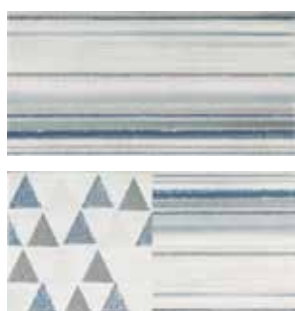
201657/05 17 ■
Bacchetta Color Genziana
2x40 24



201661/05 17 ■
Bacchetta Color Caramello
2x40 24



201659/05 17 ■
Bacchetta Color Polvere
2x40 24



001260/15 39 ■
Domino Genziana
(misto 3 pz)
20x40 6



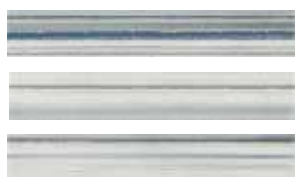
001258/15 39 ■
Vintage Genziana
20x40 4



001259/15 39 ■
Vintage Caramello
20x40 4



001254/32 66 ■
Mosaico Anice
20x40 19



201667/12 36 ■
Listello Domino Genziana
(misto 3 pz)
6,5x40 6



001256/15 39 ■
Square Fuxia
20x40 6



001257/15 39 ■
Square Arancio
20x40 6

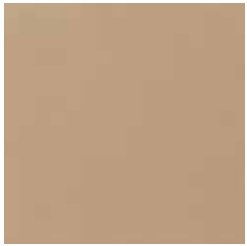


001255/32 66 ■
Mosaico Miele
20x40 19

pesi e misure / weight and sizes / poids et mesures / Gewichte und Verpackungen							
dimensioni sizes dimensions abmessungen	spessore thickness epaisseur stärke	pz/collo pcs/box pc/boite stk/ktn	mq/collo sqm/box m/boite qm/ktn	kg/collo kg/box kg/boite kg/ktn	colli/pallet box/europal boites/europal ktn/europal	mq/pallet sqm/pallet m/pallet qm/pallet	kg/europal kg/europal kg/europal kg/europal
Fondo 20x40	8 mm	19	1,52	21,40	64	97,28	1390

Pavimenti consigliati / Recommended flooring / Carreaux pour sol coordonnés / Bodenfliesen-empfehlung
 Gres porcellanato smaltato / Glazed porcelain stoneware / Grès cérame émaillé / Glasiertes Feinsteinzeug

COLORS - HARD ROCK



EE0098/32 66 ■
 Colors Corda
 33,3x33,3 14 📦



EE0096/32 66 ■
 Colors Moka
 33,3x33,3 14 📦



R02447/32 66 ■
 Corda HR
 31x31 14 📦



R02702/33 77 ■
 Blu Polveroso HR
 31x31 14 📦

CEMENTI



301750/32 66 ■
 Cementi Fog
 31x31 15 📦

pesi e misure / weight and sizes / poids et mesures / Gewichte und Verpackungen

dimensioni sizes dimensions abmessungen	spessore thickness épaisseur stärke	pz/collo pcs/box pc/boite stk/ktn	mq/collo sqm/box m/boite qm/ktn	kg/collo kg/box kg/boite kg/ktn	colli/pallet box/europal boites/europal ktn/europal	mq/pallet sqm/pallet m/pallet qm/pallet	kg/europal kg/europal kg/europal kg/europal
Fondo Colors 33,3x33,3	7,5 mm	14	1,55	23,50	48	74,40	1150
Fondo HR 31x31	9 mm	14	1,35	24,00	72	97,20	1750
Fondo Cementi 31x31	7,5 mm	15	1,44	22,10	72	103,68	1615

NATURAL COLOR



NATURAL COLOR GHIACCIO | NATURAL COLOR GENZIANA | SQUARE FUXIA